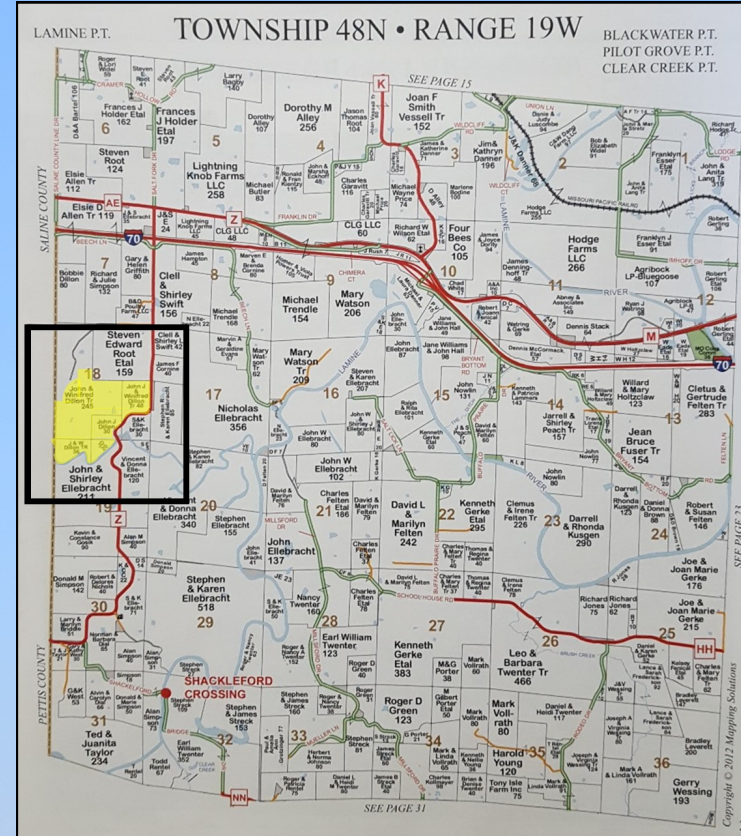




Presorted
Standard
U.S. Postage
PAID
Boonville, MO
Permit No. 389

COOPER COUNTY LAND & FARM MACHINERY AUCTION

Highway Z Blackwater, MO



Saturday, December 3rd 2016 10a.m.



Farm Related Items JD 850D Gator - Grain King Auger 61' - Sweep Auger 14' w/ Motor - Hobart Champion Welder, 10,000 watt Generator w/ Running Gear, 322 Hrs. - Aladin 220 Steam Cleaner/Power Washer - 300gal Clark Sprayer - 300gal Homemade Sprayer - Dump Bed Chain Driven w/ Running Gears - 500gal - Fuel Tank w/ Pump - 105gal L-Shape Fuel Tank/Pump - Post Hole Digger Attachment 741 - Category II Quick Hitch - 6' Frontier Blade Category I - JD 550 3pt. Hitch Tiller - 3pt. Homemade Hitch - JD 261 3pt. Finish Mower - 3 Section Harrow - 100gal Boom Sprayer - Various Running Gears - Various other farm & shop related items.



John & Winifred Dillon Trusts & The Estate of John J. Dillon

www.martinauctioncompany.com



Cody Martin
660-888-3460

Teresa Martin
660-888-9518

Terry Quinlan
660-888-9493





Real Estate 262 acres more or less located south of I-70 on Highway Z in Blackwater, MO situated in Township 48N, Range 19W, Sections 18 & 19 of Cooper County to be offered in its entirety. There are 217.6 FSA tillable acres that have been previously planted in a corn, soybean, and wheat rotation with a slow progression returning the farm back to hay & pasture. All farm land was fallow in 2016 crop season with the exception of the established pasture tract in the northeast corner of the farm. The farm has been improved with terraces and water ways as well as perimeter fences and cross fences. There is approximately 1 1/4 miles of road frontage along Hwy Z along the eastern border and the southern border is made up by the Heath Creek. For more information or property showing please contact Cody Martin at 660-888-3460 or Teresa Martin at 660-888-9518.

Real Estate Sells at 11a.m.

Real Estate Terms: \$50,000 down day of sale (non-refundable) in the form of personal check with bank letter or certified funds to be held in escrow at Cooper County Land & Title. Balance due at closing within 45 days. There will be a 3% buyer's premium applied to the final purchase price that will be collected at closing. The property will be sold absolute.



Farm Implements & Machinery

GD4500 Unverferth Grain Cart - JD 7200 Maxemerge Planter - JD HX15 Rotary Brush Hog - JD 8300 Drill - SST1201 Brillion Seeder - JD 660 Manure Spreader - 2500 Wil-Rich Field Cultivator - JD 630 Disc - JD 235 Disc - Krause 11-Shank Chisel Plow - JD 145A 5-Bottom Plow - JD 4-Bottom Plow - JD MX5 Brush Hog - Levco PTO Ditcher - JD 3950 Silage Chopper - JD Silage Wagons - 1-Bottom Plow



Tractors & Combine JD 7420 Tractor w/ 741 Loader - JD 7405 Tractor, Quad Range, 5102 Hrs - JD 4450 Tractor w/ 725 Loader, Quad Range, Engine Overhauled in Late 90's/Early 2000's - JD 9500 Combine, 3082 Engine Hrs., 2199 Separator Hrs. - JD 920 Flex Head Platform - JD 643 Low Profile Corn Head - JD 643 High Profile Corn Head - JD 7324 Header Trailer - JD770 MFWD Compact Tractor w/ Loader, 2775 Hrs.



Truck & Trailers 2001 F250 Super Cab, 7.3L, 4x4, 323,245 Miles - 25' Kiefer Flatbed Gooseneck Trailer - 24' Wilson Stock Trailer - 12' PJ Trailer - Running Gear Chuck Wagon w/ Top - Farm Wagon on Running Gears - Flatbed Wagon w/ Running Gears - 300gal Fuel Tank Trailer w/ Pump



JD 566 Round Baler, 11,400 Bales - JD 635 MoCo - JD 327 Square Baler -G4LPE Hay Tedder - MK1012 Sitrex 12 Wheel Rake - NH 1002 Stackliner Bale Wagon - Bale Loading Elevator - Bale Prongs - Loader Buckets

Hay Equipment



IH 1250 Grinder - Battle Creek Creep Feeders - 250 Bu. Feed Wagon - Portable Alley Chute - Metal & Composite Bale Rings - WW Portable Squeeze Chute - Alley Way & Tub - Corral Panels & Gates - Various Feed Troughs - Mineral Tubs - 100gal Water Troughs - IH Grinder (parts) - Round Bales - Square Straw Bales

Livestock Equipment

